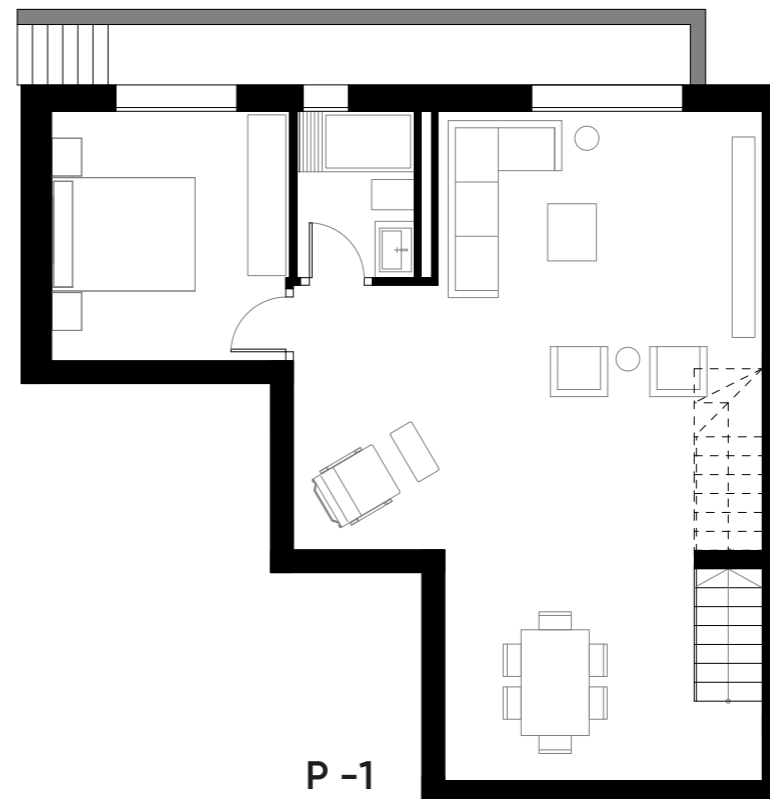
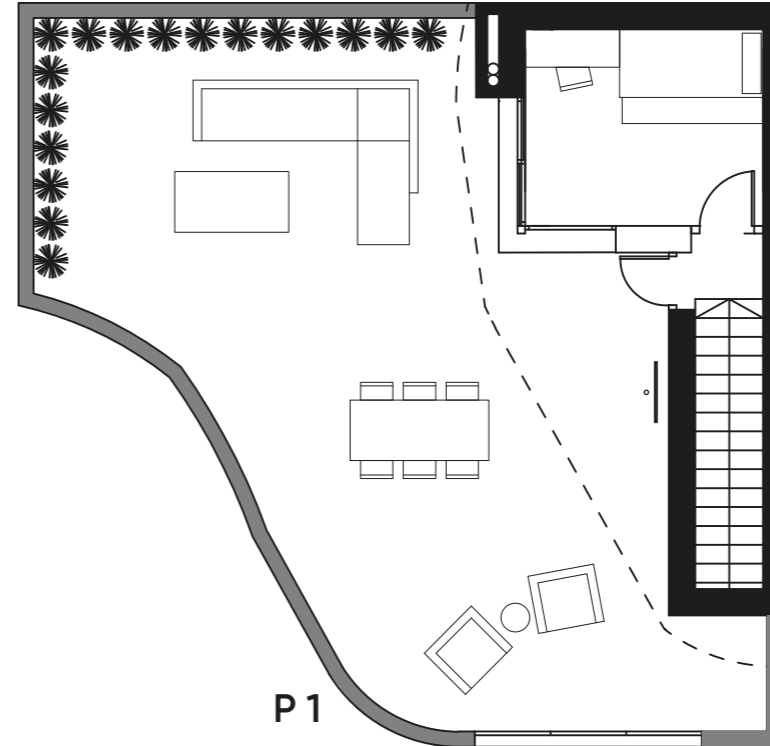
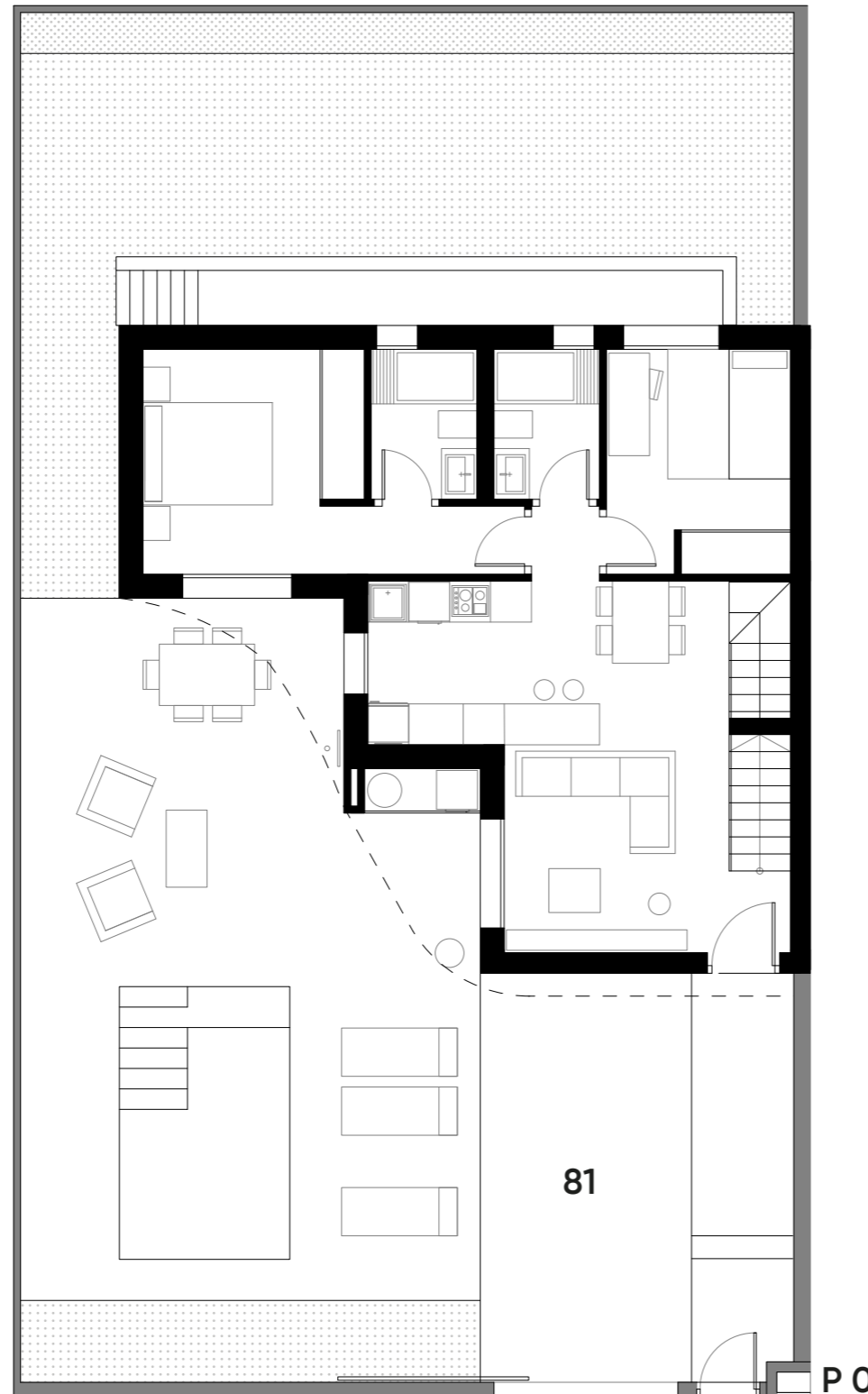
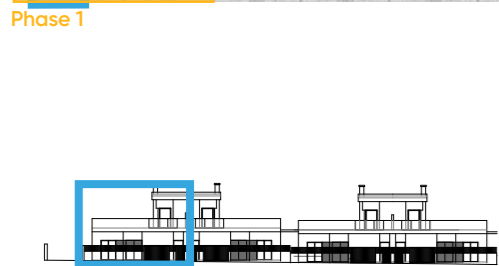
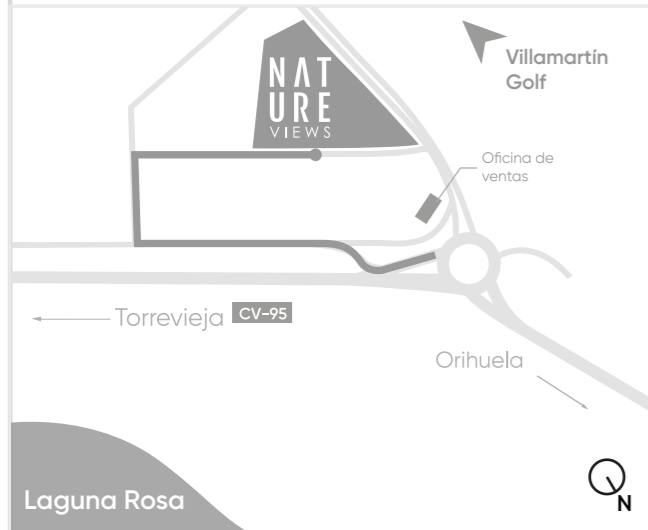


PROPERTY Phase 1: VP-1
Property location



BUILT SURFACES

Plot Surface	227.51 m ²
P-1	70.28 m ²
Ground Floor	72.15 m ²
1st Floor	12.39 m ²
Stairs GF to 1st floor	7.14 m ²
Total House	161.96 m ²
GF Terrace+Garden	134.93 m
Solarium	61.20 m

TOTAL 358.09 m

USEFUL SURFACES

P 0

Living-Room-Kitchen	27.70 m ²
Bedroom 1	13.08 m ²
Bedroom 2	8.91 m ²
Bathroom 1	3.41 m ²
Bathroom 2	3.41 m ²
Corridor	1.10 m ²
Total P 0	116.07 m ²

P 1

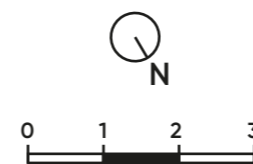
Bureau	8.20 m ²
Stairs	0.64 m ²
Total P 1	8.84 m ²

P -1

Basement	55.05 m ²
Bathroom 3	3.41 m ²
Total Basement	58.46 m ²

Total House	124.91 m ²
Total Ground Floor Terrace	130.15 m ²
Total Solarium	56.95 m ²

i All the images included in this catalog have no contractual value, and are merely illustrative, being subject to modifications due to technical or legal requirements of the Facultative Management or competent authority. During the development of the project, the Management for technical or administrative reasons reserves the right to make some modifications to the project, without implying decrease in the quality of materials. The furniture of the interior infographics is not included, and the equipment of the houses will be the one indicated in the corresponding quality report



Promotes:



Commercializes:

